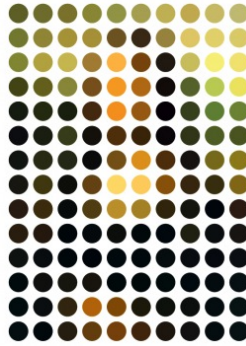


PSYC S210: Cognitive Psychology

Fall 2024



© Gary Andrew Clarke

1 Course information

Class Schedule M/T/Th/F 4:00–4:50 pm
Room J206

Instructor Alan Jern
Office: A202D
Email: jern@rose-hulman.edu

Open meeting time Thursdays, 3:00–3:50 pm (on Teams)

2 Overview and objectives

Cognitive psychology is the study of the mind. This course provides an overview of the science of how the mind works, including how people perceive, learn, think, remember, use language, reason, and make decisions. At the end of this course, you should be able to:

- Describe major theories of cognition and recall key experimental results that support them.
- Identify and explain the ways in which the human mind is and is not like a modern digital computer.
- Critically evaluate a psychological theory or experiment you learn about.

- Formulate and defend a position on several key theoretical debates within cognitive psychology.
- Apply basic cognitive psychology concepts to everyday situations.

3 Assessment

Component	Points
Syllabus quiz	10
Quizzes (3)	270
Assignments (4)	200
Participation (online)	160
Participation (in class)	150
Leading discussion	100

3.1 Quizzes

There will be three non-cumulative quizzes. Each quiz will consist of several short answer questions about topics from the preceding weeks. Quizzes will be open-book and open-notes. **However, your answers must be in your own words. Copying answers (plagiarism), and using other people or tools, like AI, to write your answers is prohibited. If you violate this rule, you will get a 0.** There is no final exam.

3.2 Missing quizzes

If you miss a quiz, you will receive a 0 for that quiz. These are the only exceptions:

1. You are traveling on a quiz day for a Rose-affiliated event. Notify me in advance with documentation and I will arrange for you to take the quiz at a different time. Failure to notify me in advance will result in a score of 0.
2. You are sick. Provide me with a doctor's note (or a note from Health Services). You do not need to provide the note in advance, so don't stress out about getting to Health Services before class if you are sick—just get the note to me as soon as possible. In this case, I will replace the score for the missed quiz with the highest of your remaining quiz scores. Failure to provide me with a doctor's or nurse's note will result in a score of 0.
3. An unexpected personal or family emergency that isn't captured by the exceptions above (judged on a case-by-case basis). Contact me if something urgent and unexpected comes up and I will try to work out a fair solution.

3.3 Assignments

Assignments will generally require you to think more deeply about one topic or reading from the class and/or perform a simple experiment and then write a short paper.

3.4 Participation

This course will be heavily dependent on discussion. Therefore you are expected to come to class having already completed the required reading and prepared to discuss it thoughtfully.

3.4.1 Online score

To make discussions more productive, some pre-discussion will happen online through [Perusall](#). See Moodle for details about signing up and using this site. Your online score for each reading will be based primarily on the number of thoughtful, high-quality comments you make throughout the reading and the number of upvotes and responses you make to other students' comments. In general, the more thoughtful and engaged you are in the discussion, the higher your score will be.

Your score for the first reading and your lowest score will be dropped. Additionally, scores for readings with student discussion leaders will not count toward your online participation score (though you must still check Perusall to see their discussion questions and you are encouraged to post responses anyway.)

3.4.2 In-class score

The Perusall discussions will serve as a jumping-off point for our discussions in class. Your in-class participation will be self-assigned using a rubric I will provide you. At three points in the quarter, you will use the rubric to determine what participation score you have earned for that third of the quarter. I will review these scores and may make adjustments if I feel they are off the mark. Your class participation score will be the sum of these scores.

3.5 Leading discussion

On one day, you and a couple other students will be appointed the discussion leaders. You will lead discussion for about 30 minutes of class that day. I will randomly assign everyone to a day during the first week of class. Your group will post discussion questions for the assigned reading on Perusall at least 12 hours before we are scheduled to discuss that reading in class. On the day of class, you will use these questions as the basis for a discussion of the readings.

I will post some general guidelines on Moodle for running an effective discussion that you should aim to follow. I will also post a grading rubric for leading the discussion on Moodle.

3.6 Final grade

Grades will be assigned as follows.

4 Course policies

4.1 Late assignments

Late assignments (including the self-assigned participation scores) will receive a point penalty that doubles for each additional day they are late. Specifically:

- 1 day late: 1% deduction

Points	Grade
≥ 90%	A
87%–89.9%	B+
80%–86.9%	B
77%–79.9%	C+
70%–76.9%	C
67%–69.9%	D+
60%–66.9%	D
< 60%	F

- 2 days late: 2% deduction
- 3 days late: 4% deduction
- 4 days late: 8% deduction
- 5 days late: 16% deduction
- 6 days late: 32% deduction
- 7 days late: 64% deduction
- 8+ days late: No credit

An assignment counts as 1 day late as soon as the deadline for that assignment has passed. If you submit an assignment late, you do not need to notify me. Just submit the assignment on Moodle. It will be automatically timestamped and I will deduct the appropriate number of points when I grade it.

There will be no exceptions made to this late policy and no assignments will be accepted later than 7 days after their deadlines. You should plan to submit your assignments before the deadline. The purpose of this policy is that if something unexpected comes up, you can submit one or two days late with minimal penalty.

Note: The late policy does not apply to the online discussions on Perusall because the whole point of those deadlines is to prepare you for in-class discussion.

4.2 Anonymous grading

Do not include your name on anything (including file name) you submit on Moodle, unless I say otherwise. The reason for this is because I use a feature on Moodle called blind grading that lets me grade your assignments without seeing your names. Your names are revealed after I've finished grading the assignment. I do this to keep my grading as impartial as possible. If you put your name on the assignment, it undermines the process for everyone.

4.3 Asking for help

I highly encourage you to contact me if you ever need help in this course. That's what I'm here for! But I also want to encourage you to be self-sufficient. So if you ever ask me a question that can be

easily answered on this syllabus or the Moodle page (a due date, a page limit, a detail about the late policy), **I will deduct 1 point from your grade total.**

The corollary of this policy is that if you ever find anything on this syllabus or the Moodle page that looks like a genuine mistake (the wrong date, inconsistent information) and you ask me about it, **I will give you 1 point of extra credit.** (Only the first person to tell me gets the extra credit.)

You don't need to be afraid to contact me. The point of this policy is to incentivize you to try to find answers yourselves first. If you look for an answer and genuinely can't find it, I want to know that too. Just tell me you tried to find it on your own first and where you looked. You won't be penalized for this.

4.4 Academic integrity

Academic misconduct will be addressed according to the policies described in the [Rose-Hulman student handbook](#). Academic misconduct includes: (1) submitting work that is not your own (including AI-generated work); (2) copying ideas, words, or graphics from any source without appropriate citation; (3) misrepresenting your work or yourself (i.e., deliberately submitting the wrong assignment or lying to explain a late assignment); (4) collaborating with other students when this is not permitted; and (5) submitting the same work for credit in two courses without prior consent of both instructors. If you are unsure whether something qualifies as academic misconduct, please check with me before doing it.

5 Course schedule

The following schedule lists topics, readings, and due dates for the whole term. This schedule is subject to change. Schedule changes will be announced in class and will be posted online. I will give you plenty of notice when changes are made.

† indicates a student-led discussion.

Week	Date	Topic	Reading	Due
0	9/5	Introduction		
	9/6	Introduction		
1	9/9	Foundations	Stanovich Ch. 3	Syllabus quiz
	9/10	Foundations	Pinker pp. 3–15	
	9/12	Foundations	Gopnik & Mitchell interview	
	9/13	Foundations	Noba: The Brain	
2	9/16	Perception	Noba: Vision	
	9/17	Perception		
	9/19	Attention	OECS: Attention	
	9/20	Attention	Simons & Chabris†	
3	9/23	Attention	Drews et al†	
	9/24	Concepts	Boroditsky et al	
	9/26	Concepts	Pinker pp. 48–57	Participation 1
	9/27			Quiz 1
4	9/30	Concepts		
	10/1	Concepts	Goldstone & Kersten	
	10/3	Concepts		Assignment 1
	10/4	Memory	Noba: Memory	
5	10/7	Memory	Schacter pp 182–188	
	10/8	Memory	Foer Ch. 1 & 5†	
	10/10	BREAK		
	10/11	BREAK		
6	10/14	Memory	Schacter pp. 188–198	Assignment 2
	10/15	Memory		
	10/17	Memory	Loftus articles	
	10/18	Memory	Christian & Griffiths Ch. 4†	
7	10/21	Reasoning		
	10/22	Reasoning	Tversky & Kahneman	Assignment 3
	10/24	Reasoning		Participation 2
	10/25			Quiz 2
8	10/28	Decision making		
	10/29	Decision making	Ariely Ch. 1†	
	10/31	Decision making	Kahneman Ch. 27†	
	11/1	Language	Gleitman & Newport	
9	11/4	Language	Pinker pp. 75–105	
	11/5	Language	Kallens et al	
	11/7	Language	Shah†	

Week	Date	Topic	Reading	Due
	11/8	Consciousness	Chalmers	
10	11/11	Consciousness		
	11/12	Consciousness	Searle	Assignment 4
	11/14	Consciousness	Gazzaniga Ch. 2	Participation 3
	11/15			Quiz 3